

PVC-U CHECK VALVES - BALL SERIES

VÁLVULAS ANTI-RETORNO PVC-U - SERIE BOLA



Sizes	Solvent cement D20 - D110 (DN15 - DN100) Threaded 1/2" - 4"	
Standards	Solvent socket - Metric, British standard, ASTM, JIS Threaded - BSP, NPT	EN ISO 1452, EN ISO 15493, BS 4346-1, ASTM D 2467, JIS K 6743 ISO 228-1, ASTM D 2464
Working pressure	@ 20°C (73°F) D20-D63 (1/2" - 2"): PN 16 (240 psi) D75 - D110 (2 1/2" - 4"): PN 10 (150 psi)	
Minimum return pressure	0,2 bar (3 psi) Minimal downstream pressure to keep the valve closed in horizontal position. Presión mínima aguas abajo para mantener la válvula cerrada en caso de instalación horizontal.	
Materials	O-rings: EPDM / FPM	
Characteristics	<ul style="list-style-type: none"> • Completely made in plastic - corrosion free. • 100% factory tested. • Excellent flow rate. • Easy installation and maintenance. • May be used either vertically and horizontally. • Available in PVC-U and Corzan® PVC-C. • Resistance to many inorganic chemicals. • Excellent flow characteristics. 	<ul style="list-style-type: none"> • Fabricada completamente en plástico - libre de corrosión. • Probadas al 100% en fábrica. • Excelente coeficiente de caudal. • Fácil instalación y mantenimiento. • Se pueden usar indistintamente verticalmente o horizontalmente. • Disponibles en PVC-U y Corzan® PVC-C. • Resistencia a múltiples sustancias químicas inorgánicas. • Excelentes características de conducción.
Certifications / regulations	Check valve design regulation - ISO 16137:2006	

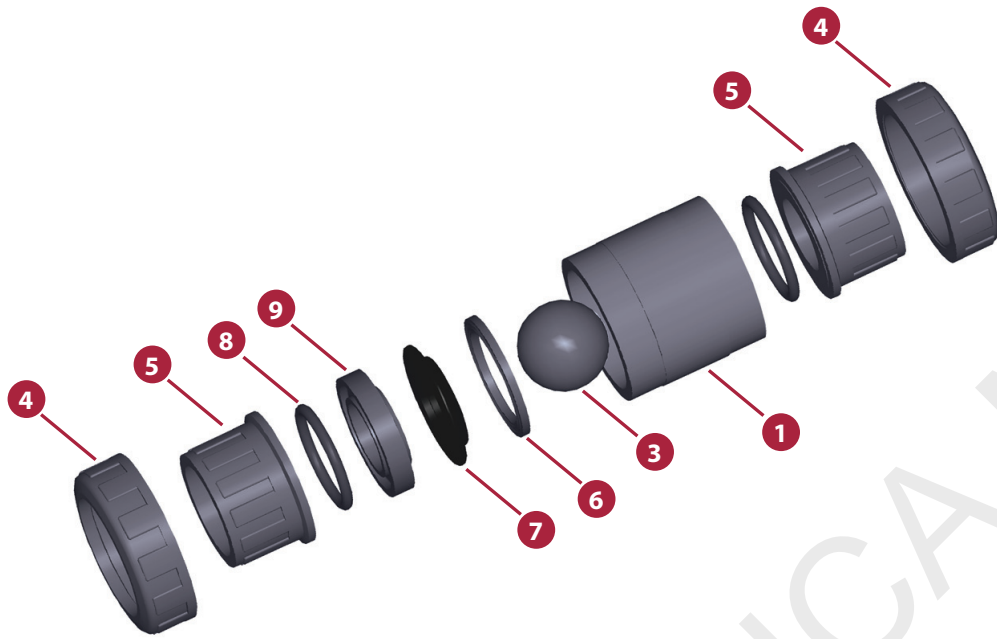
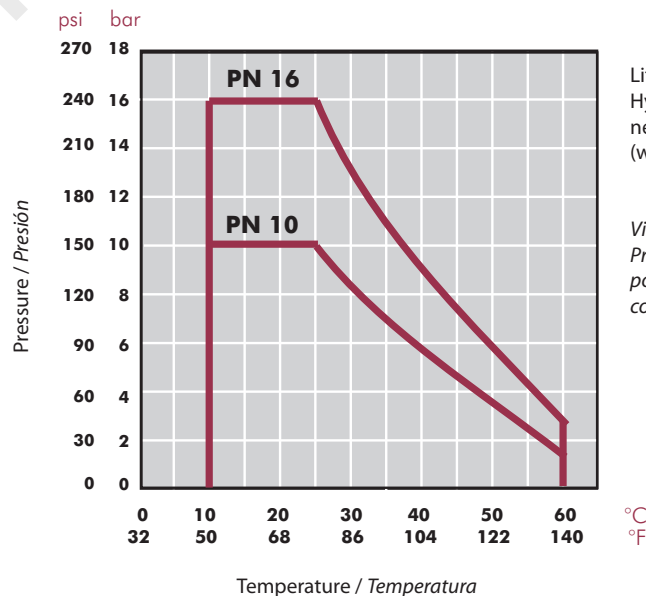


FIG.	Parts	Despiece	Material
1	Body	Cuerpo	PVC-U
3	Ball	Bola	PVC-U
4	Union nut	Tuerca	PVC-U
5	End connector	Manguito enlace	PVC-U
6	Closing ring	Anillo de cierre	PVC-U
7	Body o-ring	Junta cuerpo	EPDM / FPM
8	End connector o-ring	Junta manguito	EPDM / FPM
9	Seal-carrier	Portajuntas	PVC-U

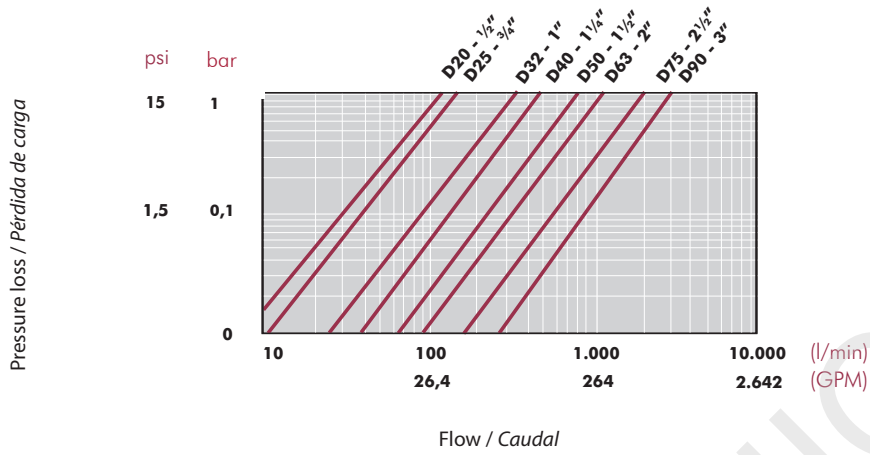
PRESSURE / TEMPERATURE GRAPH
DIAGRAMA PRESIÓN / TEMPERATURA



Life: 25 years
Hydrostatic maximum pressure a component may withstand in continuous service (without overpressure)

Vida útil: 25 años
Presión hidrostática máxima que un componente es capaz de soportar en servicio continuo (sin sobrepresión)

PRESSURE LOSS DIAGRAM
DIAGRAMA DE PÉRDIDAS DE CARGA



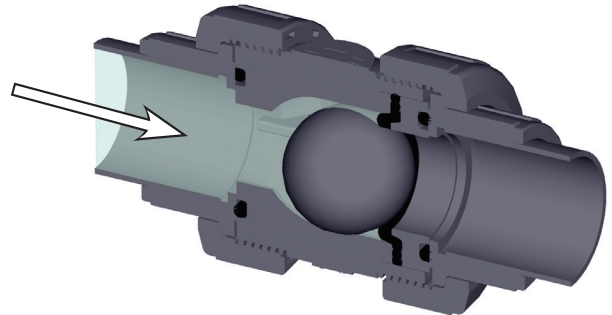
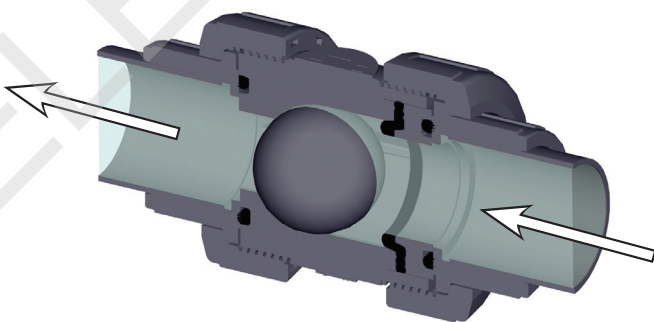
RELATIVE FLOW
FLUJO RELATIVO

D	20-1/2"	25-3/4"	32-1"	40-1 1/4"	50-1 1/2"	63-2"	75-2 1/2"	90-3"
DN	15	20	25	32	40	50	65	80
Kv ₁₀₀	99	128	308	453	795	1040	1932	2754
Cv	7	9	22	32	56	73	135	193

$Cv = Kv_{100} / 14,28$
 Kv_{100} (l/min, $\Delta p = 1$ bar)
 Cv (GPM, $\Delta p = 1$ psi)

Open
Abierto

Closed
Cerrado



ASSEMBLY INSTRUCTIONS

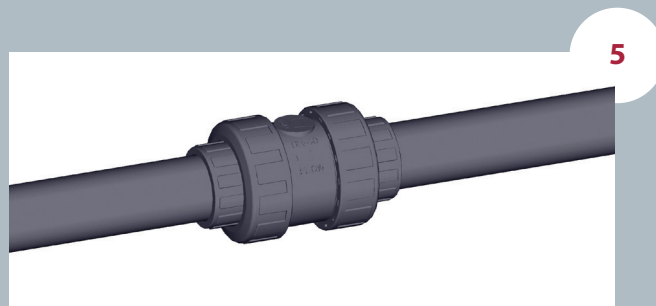
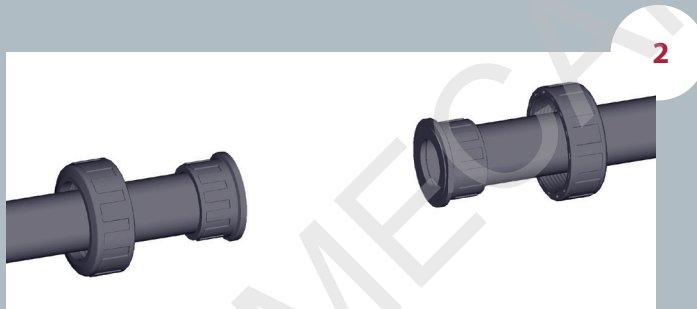
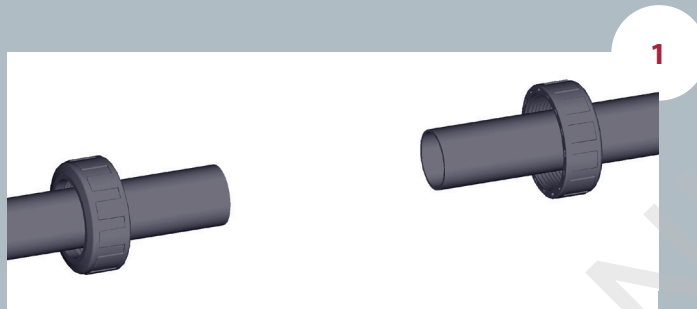
Solvent socket or threaded unions

Loosen the valve union nuts (4) and separate these and the end connectors (5) from the valve body. Pass the pipe through the nuts and then place the bushes over the end of the pipe. The socket unions should be glued onto the pipe using a PVC-U or PVC-C adhesive and pressure should not be applied to the system until a drying period of at least 1 hour per bar of working pressure has elapsed. In the case of threaded unions, PTFE tape should be applied to the male threads. The pipes can now be attached to the valve by hand tightening down the nuts.

INSTRUCCIONES DE MONTAJE

Uniones encoladas o roscadas

Afloje las tuercas (4) de la válvula y séparelas de los manguitos (5). Introduzca las tuercas en los tubos y a continuación fije los manguitos en los extremos del tubo. Las uniones encoladas se realizarán con un adhesivo para tubos de PVC-U o PVC-C rígido y no se aplicará presión hasta transcurridas al menos 1 hora por bar. En las uniones roscadas se colocará cinta de PTFE en las roscas macho. A continuación ya podrá colocarse la válvula entre los manguitos y apretar a mano las tuercas sobre la válvula.



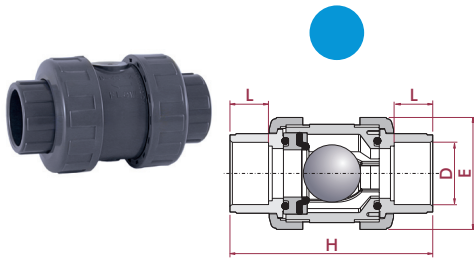
UP-B. 67. SF1 - BALL CHECK VALVE

Ball check valve

- PVC-U body
- Female solvent socket
- Metric series
- O-rings in EPDM

Válvula anti-retorno de bola

- Cuerpo en PVC-U
- Encolar hembra
- Serie métrica
- Anillos tóricos en EPDM



D	DN	PN	REF.	CODE
20	15	16	05 67 220	22078
25	20	16	05 67 225	22079
32	25	16	05 67 232	22080
40	32	16	05 67 240	22174
50	40	16	05 67 250	25697
63	50	16	05 67 263	25698
75	65	10	05 67 275	22175
90	80	10	05 67 290	22176
110	80	10	05 67 310	22177

L	H	E
16	84	52
19	108	62
22	119	70
26	142	84
31	162	94
38	192	117
44	232	148
51	269	179
51	269	179

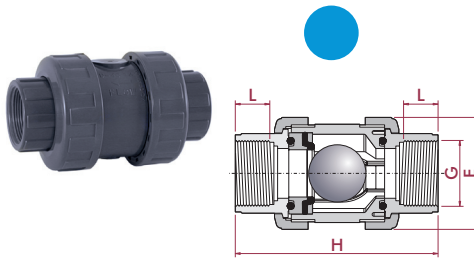
UP-B. 67. FT1 - BALL CHECK VALVE

Ball check valve

- PVC-U body
- BSP female thread
- O-Rings in EPDM

Válvula anti-retorno de bola

- Cuerpo en PVC-U
- Roscar hembra BSP
- Anillos tóricos en EPDM



G	DN	PN	REF.	CODE
½"	15	16	05 67 420	22061
¾"	20	16	05 67 425	22062
1"	25	16	05 67 432	22085
1¼"	32	16	05 67 440	22086
1½"	40	16	05 67 450	25699
2"	50	16	05 67 463	25700
2½"	65	10	05 67 475	22087
3"	80	10	05 67 490	22088
4"	80	10	05 67 510	22089

L	H	E
16	84	52
19	108	62
22	119	70
26	142	84
31	167	94
38	192	117
44	232	148
51	269	179
61	279	179

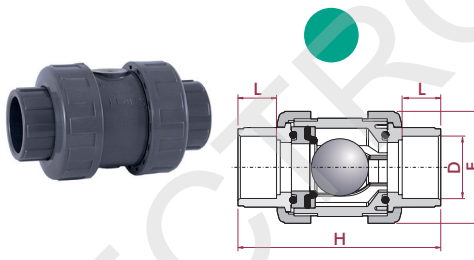
UP-B. 67. SF4 - BALL CHECK VALVE

Ball check valve

- PVC-U body
- Female solvent socket
- Metric series
- O-Rings in FPM

Válvula anti-retorno de bola

- Cuerpo en PVC-U
- Encolar hembra
- Serie métrica
- Anillos tóricos en FPM



D	DN	PN	REF.	CODE
20	15	16	05 67 220 VI	22090
25	20	16	05 67 225 VI	22091
32	25	16	05 67 232 VI	22092
40	32	16	05 67 240 VI	22239
50	40	16	05 67 250 VI	25701
63	50	16	05 67 263 VI	25702
75	65	10	05 67 275 VI	22240
90	80	10	05 67 290 VI	22241
110	80	10	05 67 310 VI	22242

L	H	E
16	84	52
19	108	62
22	119	70
26	142	84
31	162	94
38	192	117
44	232	148
51	269	179
51	269	179

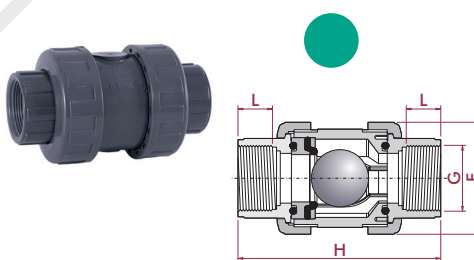
UP-B. 67. FT4 - BALL CHECK VALVE

Ball check valve

- PVC-U body
- BSP female thread
- O-Rings in FPM

Válvula anti-retorno de bola

- Cuerpo en PVC-U
- Roscar hembra BSP
- Anillos tóricos en FPM



G	DN	PN	REF.	CODE
½"	15	16	05 67 420 VI	22243
¾"	20	16	05 67 425 VI	22244
1"	25	16	05 67 432 VI	22267
1¼"	32	16	05 67 440 VI	22268
1½"	40	16	05 67 450 VI	25703
2"	50	16	05 67 463 VI	25704
2½"	65	10	05 67 475 VI	22269
3"	80	10	05 67 490 VI	22270
4"	80	10	05 67 510 VI	22893

L	H	E
16	84	52
19	108	62
22	119	70
26	142	84
31	167	94
38	192	117
44	232	148
51	269	179
61	279	179